



Pushlock

The deadlocking window bolt



Midibolt MC93: For use with timber windows.

Operation: Key lockable bolt provides push to bolt and key to deadlock operation. **Note:** Cylinder can be located on either side of bolt for convenient operation.

Application: Provides safe bolting or deadlocking of most types of windows.

Components



Ferrule



Ferrule
Screws



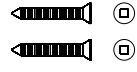
Lock Body



Packer



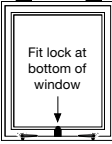
Keys



Timber Fixing
Screws

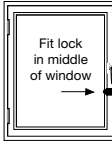
Fixing Instructions

1



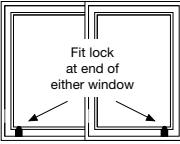
Fit lock at bottom of window

Awning Windows



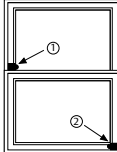
Fit lock in middle of window

Casement Windows



Fit lock at end of either window

Sliding Windows



Option 1
With both windows sliding, fit to top of lower sash locking into upper sash

Option 2
With fixed top window, fit to lower sliding sash

Double Hung Windows

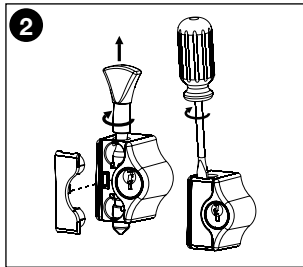
Determine fixing location

Select fixing position, refer to diagrams above. Hold assembled lock in desired mounting position and check for:

- Orientation of cylinder (bolt can be inserted from either end)
- Bolt movement - use packer when bolt doesn't engage frame
- When using a 5 pin key (refer step 4), use either the 4mm

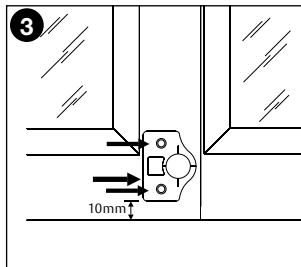
packer or drill a 16mm clearance hole of 5mm depth to accommodate point of the key

Extra Clearance - For extra clearance and strength it may be necessary to use the packer for optimal bolt engagement. **Note:** we recommend using a packer when fitting lock to casement or awning windows.



Remove bolt and screw cover

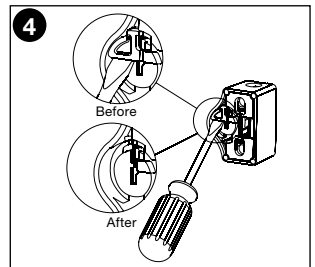
With unit unlocked remove bolt with twist and pull action. Remove cover by twisting a flat head screwdriver in the end slots.



Mark fixing screw locations through packer

Check clearance of screws with glass line and ensure bolt will not interfere with frame in the unlocked position (Leave at least 10mm clearance between lock body and frame). Drill two 4mm pilot holes to suit fixing screws where marked.

Drilling Holes Accurately - We recommend centre punching holes prior to drilling.



Remove key stop for 5 pin key

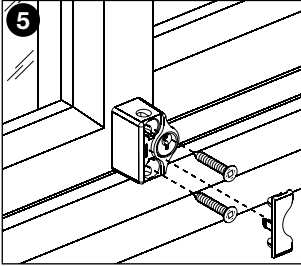
Note: Optional - this step is not required if using the key supplied in the pack.

When using a 5 pin key (keyed alike with door locks), snap off triangular cylinder stop, on the back of product using a flat screwdriver as shown and mount lock using 4mm packer to provide rear clearance for longer key.



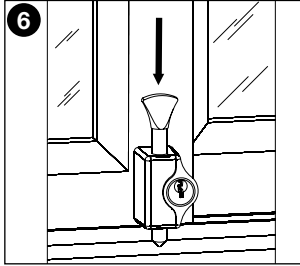
Pushlock

The deadlocking window bolt



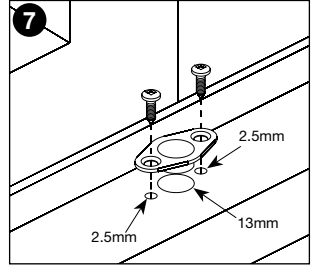
Attach lock to frame

Screw lock body into position using the timber fixing screws. Replace bolt, check operation and refit screw cover.



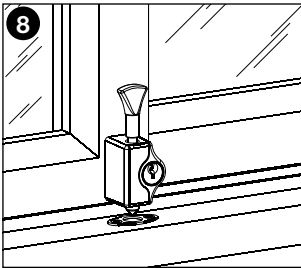
Mark and drill bolt hole

With window firmly closed, tap end of bolt to mark drilling location and drill 13mm diameter hole, deep enough for full movement of bolt.



Fit ferrule

Press ferrule into hole and mark fixing locations. Drill two 2.5mm pilot holes to suit fixing screws and fix ferrule into position.

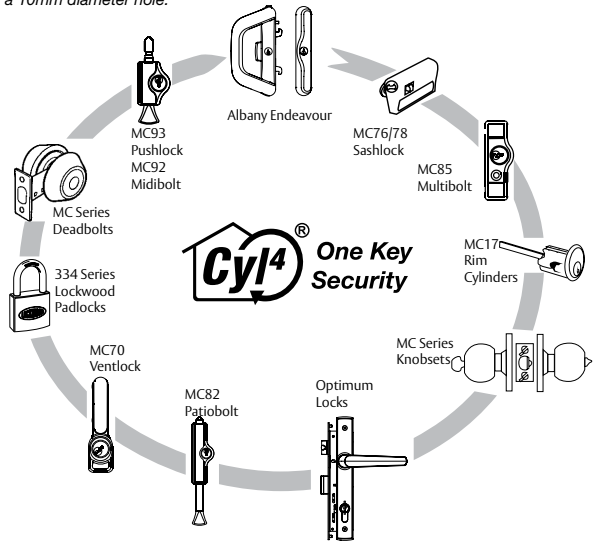


Check operation

Ensure bolt engages fully so that key can be locked. Pull bolt out to unlocked position and open window to check that bolt remains clear of obstacles throughout the range of window movement.

For secure ventilation of Sliding and Double Hung Sash Windows - We suggest drilling an extra bolt hole 100mm from first. Additional ferrules are available from most Locksmiths and Hardware stores.

If the ferrule is not to be fitted, drill a 10mm diameter hole.



10 Year Warranty

The warranty covers manufacturing defects, standard finishes but excludes plated finishes or finishes exposed to a corrosive environment. The warranty excludes damage caused by installation contrary to written instructions and incidental or consequential damage. We recommend regular cleaning with mild detergent.



CYL4: With One Key Security you can use a single key to operate all the locks in your home. This lock can be supplied keyed alike in any quantity and keyed alike to a variety of ASSA ABLOY locks including most similar products of other makes. Get one key convenience simply by asking your retailer.

ASSA ABLOY New Zealand Limited
6 Armstrong Road, Albany
Auckland 0632, New Zealand
www.yalelock.co.nz

For customer feedback: info.nz@assaabloy.com



Patent: NZ 326495, AU 727454, GB 2325021